

BL Broth

Medium used for the cultivation and enumeration of Bifidobacterium spp.

• CONTENTS (Liter)

Beef Extract	3.0 g
Liver Extract	5.0 g
Yeast Extract	5.0 g
Proteose Peptone	10.0 g
Tryptone	5.0 g
Soy Peptone	3.0 g
Soluble Starch	0.5 g
Glucose	10.0 g
Dipotassium Phosphate	1.0 g
Monopotassium Phosphate	1.0 g
Magnesium Sulfate	0.2 g
Sodium Chloride	0.01 g
Manganese Sulfate	0.0067 g
L-Cysteine HCl H ₂ O	0.5 g
Ferrous Sulfate	0.01 g
Polysorbate 80	1.0 g
Final pH = 6.8 ± 0.2 at 25°C	

• PROCEDURE

Suspend 45.23 G of powder in 950 mL of distilled or deionized water. Heat to boiling until completely dissolved. Sterilize by autoclave at 121°C for 15 minutes. Cool to 45 - 50°C in water bath. Aseptically add 5% of Horse Blood Defibrinated (MB-H1883) or Sheep Blood Defibrinated (MB-S1876). Mix well. Pour into tubes.

• INTERPRETATION

BL Broth is a medium used for the cultivation and enumeration of Bifidobacterium spp. Beef extract, liver extract and yeast extract provide growth factors, vitamins and minerals. Peptones and soluble starch provide nitrogen, carbon, vitamins and minerals for growth of microorganisms. Glucose is the carbon source. Phosphates are the buffering agents. Magnesium sulfate, manganese sulfate and ferrous sulfate provide ions, essential electrolytes and minerals. Sodium chloride maintains the osmotic balance. L-Cysteine is the reducing agent. Polysorbate 80 provides fatty acids.

• TECHNIC

Inoculate the specimen using a sterile needle to the medium. Incubate at 36 ± 1°C for 48 - 72 ± 3 hours under anaerobic condition. Refer appropriate references for recommended test procedure.

• QUALITY CONTROL FOR USE

Dehydrated medium

Appearance: free-flowing, homogeneous

Color: beige

Prepared medium

Appearance: opaque

Color: cherry red

Incubation conditions: 36 ± 1°C / 48 - 72 ± 3 hours under anaerobic condition

Microorganism	ATCC	Inoculum CFU	Growth
<i>Bifidobacterium longum</i>	15707	50-100	good
<i>Bifidobacterium bifidum</i>	29521	50-100	good
<i>Bifidobacterium breve</i>	15701	50-100	good

• STORE

The powder is very hygroscopic. Store the powder at room temperature, in a dry environment, in its original container tightly closed and use it before the expiry date on the label. Store prepared medium at 2 - 8°C.

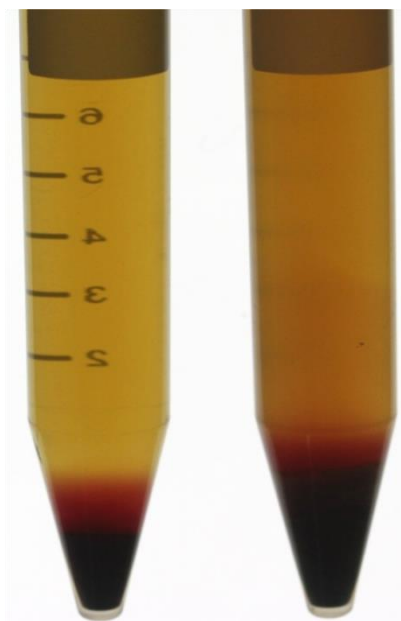
• REFERENCES

1. Ronald M. Atlas(2006), Handbook of Microbiological media for the examination of Food, Second Edition.

• PACKAGE

Cat. No : MB-B1602 BL Broth	500 G
--------------------------------	-------

• MICROBIAL CULTURE IMAGES



None

Bifidobacterium longum
ATCC 15707

Incubation conditions : $36 \pm 1^\circ\text{C}$ / 48 - 72 \pm 3 hours under anaerobic condition